



# **NC Ports Hurricane Florence Response**

North Carolina General Assembly  
October 3, 2018

# Port of Preparation

- Hurricane Preparedness Exercise 6/15
- Hurricane Preparation Plan activated 9/10
- Hosted twice daily emergency preparation planning meetings 9/10-9/13
- Hosted multiple customer calls beginning 9/10
- Participated in emergency preparation calls with Coast Guard and maritime stakeholders beginning 9/10



# Landside and Waterside Preparations

- Hurricane Preparation Plan activated to protect cargo, facilities and equipment
- Container stacks block stowed and full containers moved to higher elevation
- Rolling stock and equipment relocated to minimize damage
- Generator power prepared for refrigerated cargo and IT systems
- Warehouses, offices and other port buildings secured to minimize damage
- Cranes in Wilmington and Morehead City secured

# Port of Precaution

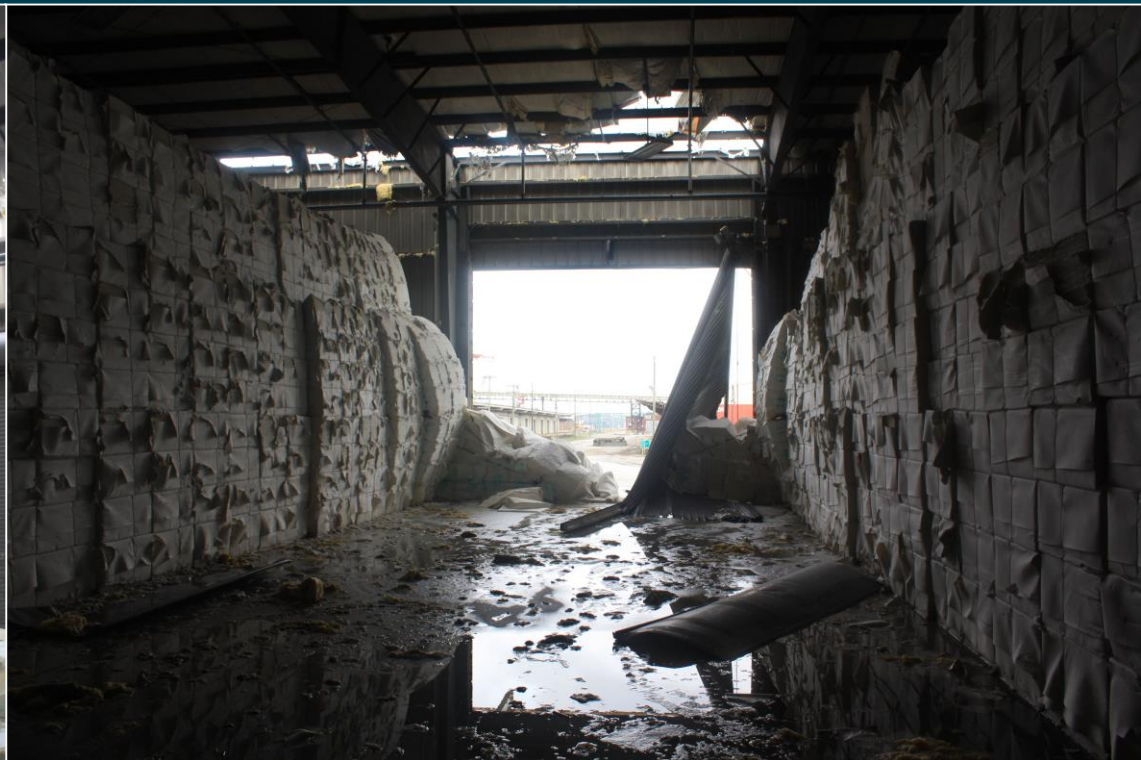
- Final vessel sailed 1800 9/11
- Commercial truck operations suspended 1900 9/11
- USCG declared Port Condition Zulu at 0900 9/12
- All storm preparations completed by close of business 9/12
- Restricted access and closed terminals in Wilmington and Morehead City 9/13-9/19

# During the Storm

- Fueling operations for generator power 9/12 and 9/13
- Police Department patrol both facilities







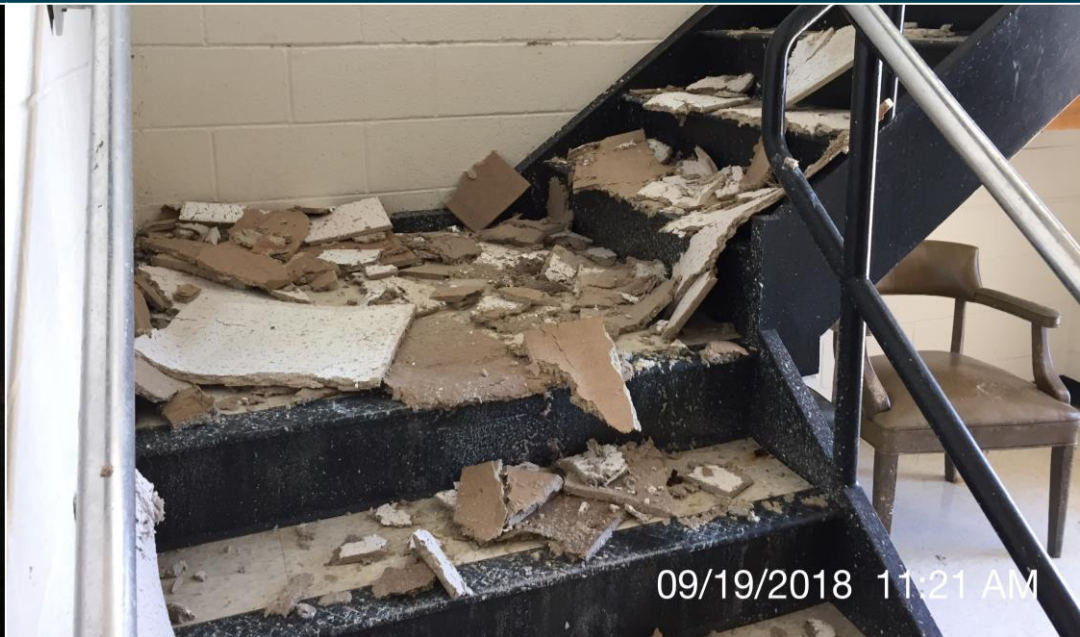
















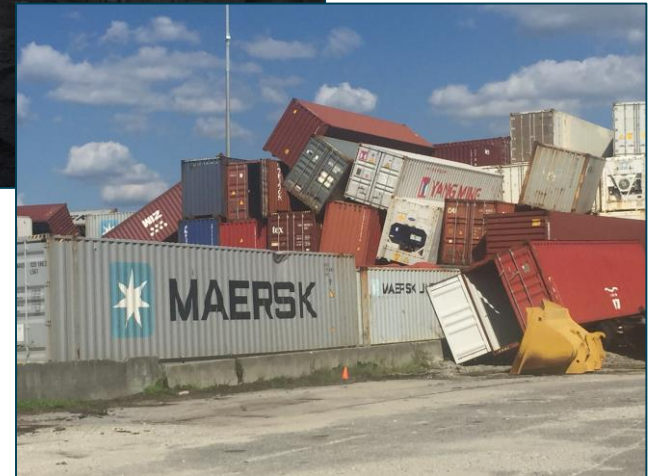


# Port of Recovery

Mobilize Storm Response Team for initial assessment as quickly and safely as possible

## Goals

- Assess major infrastructure for damage
- Document damage at each facility
- Safely resume commercial operations



# Recovery Communications

- Communications with local, state and federal agencies regarding recovery and reopening efforts
  - NCDOT
  - North Carolina Emergency Management Operations Center
  - United States Coast Guard
  - Army Corps of Engineers
  - FEMA/MARAD
  - Duke Energy
  - NCDOT
- Communications regarding post-storm operating status
  - Employees
  - Customers



# Landside and Waterside Operations Resume

- USCG opened both channels with restrictions 9/18
- Morehead City accepted first vessel 9/19 and Wilmington 9/20
- Both facilities resumed full commercial truck operations 9/24



**Channel restrictions still exist**

# Damage Assessment

## Port of Wilmington

- Warehouses and administrative buildings
  - Major sections of wall/roof blown away
  - Water intrusion
  - Blown-in doors
  - Missing shingles
- Equipment
- Cargo

## Port of Morehead City

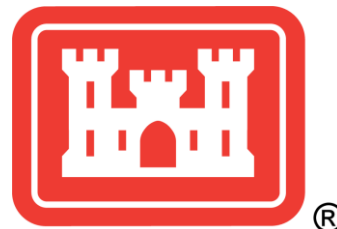
- Warehouses and administrative buildings
  - Roof and water damage
  - Major wall damage
  - Damage to warehouse doors
  - Missing siding
  - Water intrusion
- Equipment
- Cargo

- Estimated property repair or replacement cost **\$54M**
- No major damage to container cranes or berths



# Recovery. A TEAM Effort.

NORTH CAROLINA PORTS®



FEMA

